



Solutions for Waterproofing



constructive solutions

ABOUT FOSROC INTERNATIONAL

Since the company's beginnings over 80 years ago, Fosroc has developed into an International leader in delivering Constructive Solutions for projects across a broad range of market segments including transport, utilities, industrial and general buildings.

Fosroc's commitment to customer service and technical support is second to none. We work closely with architects, structural engineers, contractors and owners to best understand their requirements. Together we can develop a bespoke solution for a construction project, adding value and becoming more than just a materials supplier, but a solution provider.

Fosroc has an extensive network of offices and manufacturing locations across Europe, the Middle East, India, North, South and East Asia, and is further represented in other regions across the world by distributor and licensee partners. Selecting from the full portfolio of Fosroc products and services and integrating expert technical support, world class customer service and innovation, Fosroc goes beyond just product selling to ensure that we partner with our customers to deliver complete constructive solutions.

- > Protective Coatings
- > Concrete Repairs
- > Industrial Flooring
- > Joint Sealants
- > Grouts and Anchors
- > Waterproofing



FOSROC DELIVER SOLUTIONS NOT JUST PRODUCTS

CAD Details

A library of standard CAD details are available.

Project Specifications

Dedicated specification managers on hand to assist with correct system choices and tailored solutions.

Site Support

Expert product and application support made available from our specialist teams.

Seminar & Training

Comprehensive programme of seminars and training courses designed to expand and reinforce your knowledge.

PARCHEM PROFILE

Parchem Construction Supplies (Parchem) is a leading manufacturer and supplier of products and equipment to the Australian & New Zealand concrete and construction markets.

Through its divisions and heritage, Parchem has built over 50 years experience in servicing the construction, civil, and concrete industries.

Parchem has strong brands and a broad range of products. We pride ourselves on our expertise and continue to seek innovation, with access to new technologies through global networks.

Parchem design and manufacture goods specifically for the Australian market. Quality and performance are key, and this can be seen in our enviable product offering.

Parchem is the sole licensee of the Fosroc brand in Australia and New Zealand.



FOSROC WATERPROOFING

FOSROC's vast experience in providing constructive solutions to many famous building structures around the world has been built on a broad portfolio of products. These include waterproof membranes, waterstops, joint sealants, concrete repair mortars, resin flooring, protective coatings, structural strengthening, grouts and concrete admixtures manufactured to the highest quality standards backed by independent test certificates.

We recommend the best technology for each project rather than being driven by one particular response. We liaise and evaluate with our customers the most appropriate solution for what they are trying to achieve. We just want to deliver what is best to the customer providing peer to peer based solutions for engineering problems to ultimately find a number of ways to create value.

We have a full range of world class waterproofing systems providing the most up-to-date technologies from basement to roof to ensure long lasting integrity and durability of your building structure.



Belowground Waterproofing



Above-ground Waterproofing



Wet Areas Waterproofing



Joint Sealants



Concrete Technology

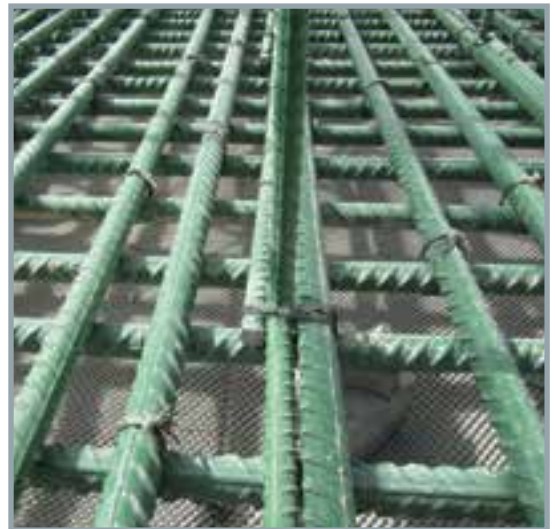
BELOW-GROUND WATERPROOFING

Fosroc offers one of the most comprehensive ranges in below-ground waterproofing, providing leak-free buildings around the world. These systems are manufactured to the highest quality standards backed by independent test certificates.

For below-ground structures where the exterior face of the structural concrete is inaccessible, the waterproofing must be applied prior to pouring the concrete. Conventional systems are either loose-laid or self-adhering to the substrate not the structural concrete, this means there is no seal between the waterproofing and the structural concrete which can lead to water travelling between the waterproofing and the structure from any leakages that may occur. BS8102:2009 highlights this problem and recommends that a fully-bonded pre-applied waterproofing system be used to mitigate this risk. A similar problem occurs where ground settlement takes place.

Fosroc have developed an innovative system, **Proofex Engage**, which incorporates a unique cell mesh which mechanically bonds to freshly placed concrete giving a tenacious waterproof seal, preventing water migration even if ground settlement occurs. It is installed rapidly with no need for priming or protection and can be trafficked immediately after application. It is also gas resistant and highly durable and is unaffected by contaminants within the ground. Quality is assured through BBA and EN13967:2004 and the system is suitable for use in accordance with BS8102:2009 Grades 1, 2 and 3.

- Rapid installation no priming or protection required.
- Assured watertight integrity even in the event of ground settlement.
- No water-tracking.
- Easy jointing and compatible full range of ancillaries.
- Integrity assured at pile caps.
- Excellent solution for precast concrete.
- Protects structure against ground contaminants.
- Long term watertight durability.



System type	Example of application use	Fosroc Product name
Pre-applied membrane	Piled wall basements	Proofex Engage
Self-adhesive membranes	Ground slabs and shallow basements	Proofex Self-Adhesive Membranes
Liquid-applied membranes	Foundations / dampproofing	Nitoproof range
Cementitious coatings	Existing basements	Vandex Range*
Torch-applied membranes	Basements	Index Range*
PVC waterstops	Concrete joints	Supercast Range
Swellable waterstops	Concrete joints	Supercast SW and Hydrotite ranges
Injection hose waterstops	Concrete joints	Supercast Predimax
Drainage membranes	Retaining walls and planters	Proofex Sheetdrain 81

* Parchem is a distributor of the Vandex, Index and Hydrotite product portfolio



The **Nitoproof** liquid-applied coatings range provides protection for foundations or for dampproofing, they are easy to apply and are available in a wide range of grades.



Supercast Predimax injection hose waterstops for future provision of sealing leaking joints.



Post-applied bitumen based waterproofing for floors and walls can be easily installed using **Proofex self-adhesive membranes** in conjunction with **Proofex Protection Board PP** or **Proofex Sheetdrain 81**.



PVC and swellable waterstops to stop the passage of water through joints in concrete structures.

ABOVE-GROUND WATERPROOFING

Flat/sloping roofs that are trafficked can be easily waterproofed by using either a spray or liquid-applied membrane to give seamless protection and rapid return to service times.



Polyurea WHE110 & WPE110 are an excellent solution for waterproofing flat roofs where upstands are prevalent due to a high number of air-conditioning units / pipes / turbines etc. The seamless waterproofing integrity achieved gives peace of mind and application times are rapid allowing services to be installed quickly and returned back to service in the shortest times possible.

System type	Example of application use	Fosroc Product name
Spray Applied Membrane	Buried and exposed roofs	Polyurea WHE110 & WPE110 Hybrid & Pure Polyurea
Hand Applied Liquid Membrane	Retaining walls	Nitoproof 210 Water Based Rubberised Bitumen Membrane
Hand Applied Liquid Membrane	Wet rooms and balconies beneath tiles	Nitoproof 310 Fibre Enhanced Water Based Latex Membrane
Hand Applied Liquid Membrane	Wet rooms, balconies, buried and exposed roofs	Nitoproof 410 Two Part Cementitious Membrane
Hand Applied Liquid Membrane	Balconies and buried roofs	Nitoproof 750 Polyurethane Membrane
Hand Applied Liquid Membrane	Wet rooms, balconies, buried and exposed roofs	Nitoproof 810 Solvent Free Modified Polyurethane Membrane
Topcoats	Exposed areas over Nitoproof 410 & Nitoproof 810	Nitoproof Top Coat UV & Nitoproof Top Coat EW Hybrid Acrylic Topcoat
Hand Applied Tile Adhesive	Wet rooms	Nitotile Flex Rubber Modified, Cement Based Tile Adhesive



ROOF / PODIUM DECK WATERPROOFING

In today's ever changing world there is added importance being placed on waterproofing of above-ground structures with social, environmental and economic benefits.

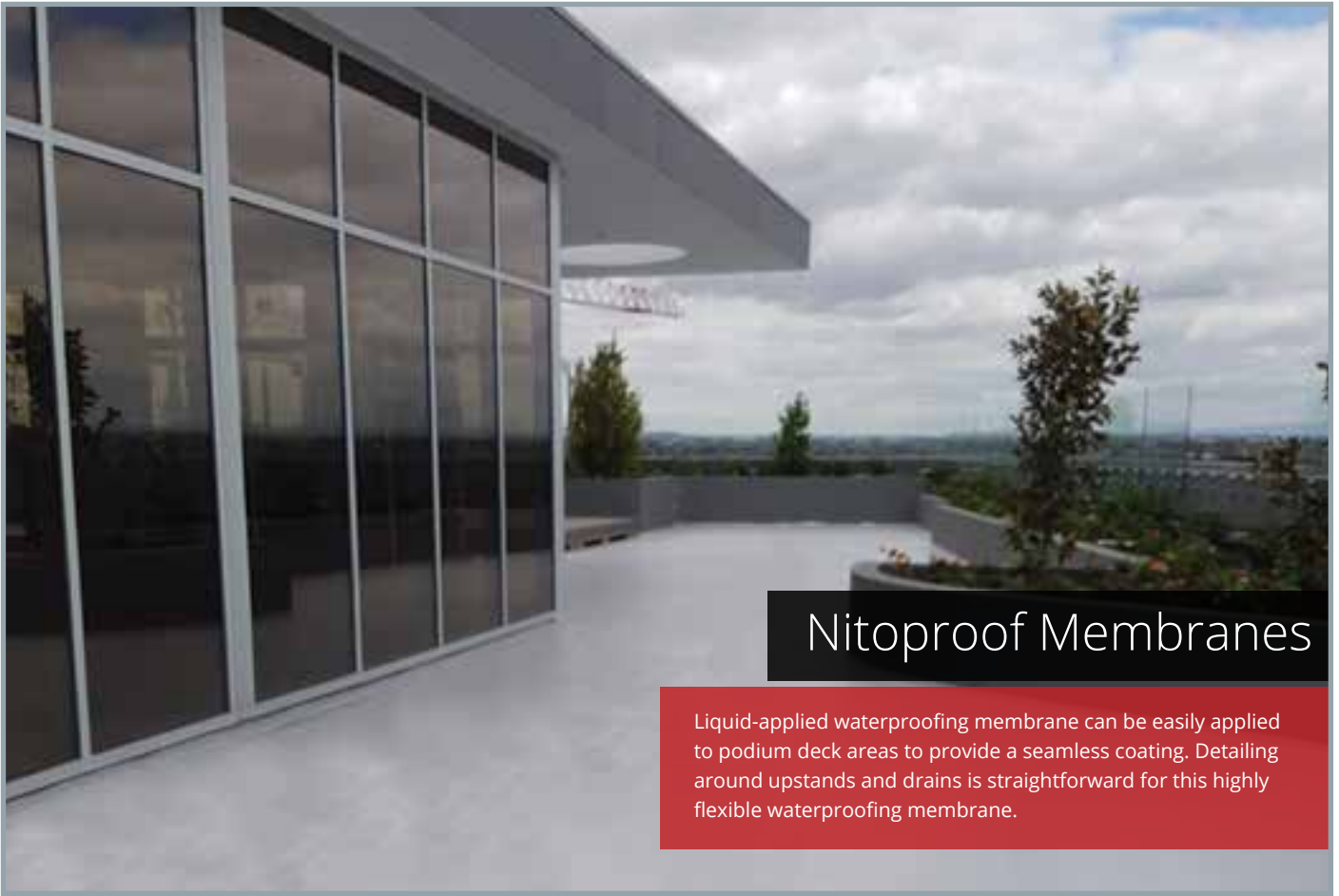
This ever-increasing trend coupled with traditional flat/sloping roofs and podium decks allows Fosroc to promote its full range of spray/liquid-applied membranes, drainage membranes to best effect servicing the needs of clients and designers.

Roofs can be transformed from an underused and functional area into an attractive feature, such as a garden or open space that can be visited and enjoyed by building occupants. Fosroc's waterproofing systems include **Nitoproof** liquid-applied membrane and **Polyurea** pure and hybrid spray-applied membrane.

Podium decks, especially found over underground car parks, can be waterproofed using many of Fosroc's waterproofing systems. Each project can be looked at and the best technical assistance given from one of our specification managers.

Flat/sloping roofs can be waterproofed by using either a spray or liquid-applied membrane to give seamless protection.

System type	Example of application use	Fosroc Product name
Spray-applied membrane	Podium deck / Terrace	Polyurea WHE110 & WPE110
Liquid-applied membrane	Roof / Balcony / Podium deck	Nitoproof Membranes
Drainage membrane	Roof / Podium deck	Proofex Sheetdrain 81



Nitoproof Membranes

Liquid-applied waterproofing membrane can be easily applied to podium deck areas to provide a seamless coating. Detailing around upstands and drains is straightforward for this highly flexible waterproofing membrane.



Roofs

Fosroc have an extensive range of membranes for roofs giving choice for each project type:

- **Polyurea WHE110 & WPE110** - Spray applied membrane
- **Nitoproof** - Liquid applied membrane

These membranes when combined with **Proofex Sheedrain 81** drainage membranes, will provide a complete waterproofing solution for your project.



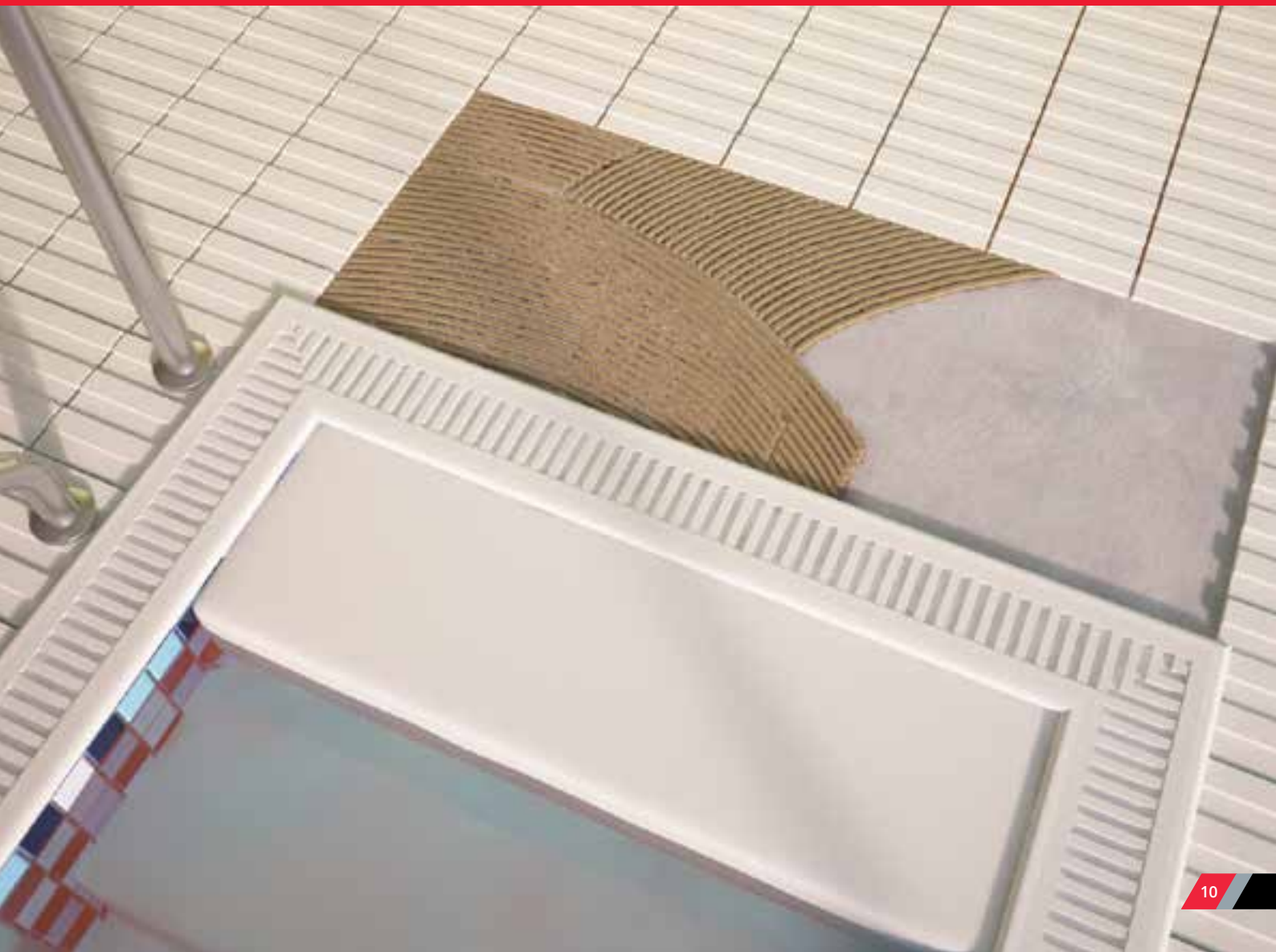
WET AREAS

Areas within a building that are supplied with water from its water supply system are vulnerable to potential leakages and subsequent damaged to its structure and interior finishes.

These critical applications can be dealt with by using a wide variety of waterproofing products supplied by Fosroc, ensuring piece of mind for long term durability and comfort.

Fosroc offers a full range of wet area waterproofing product systems, manufactured to the highest quality standards backed by independent test certificates.

Nitoproof membranes are high performance elastomeric coatings ideal for wet areas such as bathrooms and showers. They can also protect concrete and masonry and provide excellent crack bridging performance. The range includes membranes that are suitable for below and above-ground applications for new and existing substrates.





**Superior Service
Throughout
Australia**

With trade stores and warehouses throughout Australia, Parchem is able to offer a superior level of service to customers in all regions of the country.

**Single Source
Supplier**

Parchem's range of products gives you the security of dealing with a single supplier for a complete range of compatible solutions to meet the total needs of your project.

**ISO 9001 Quality
Assurance**

With its manufacturing facilities fully accredited to ISO 9001, Parchem offers its customers the assurance of independently audited quality systems.



Parchem Construction Supplies Pty Ltd
7 Lucca Road, Wyong NSW 2259
Phone: 1300 737 787
www.parchem.com.au
ABN 80 069 961 968